



Unior d.d.
Kovaška cesta 10
3214 Zreče, Slovenia
T: +386 3 757 81 00
F: +386 3 576 26 43
sales@unior.com
www.uniortools.com



2038

EN

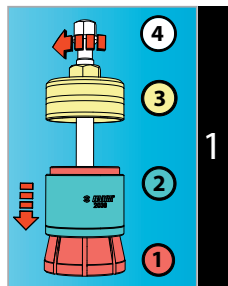
Inner bearing race puller

SLO

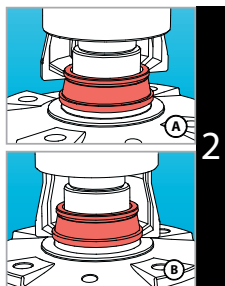
Snemalec notranjih ležajnih obročev

 **UNIOR**[®]
uniortools.com

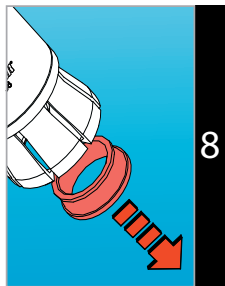
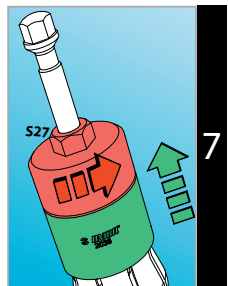
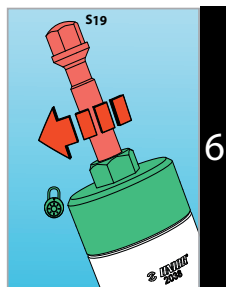
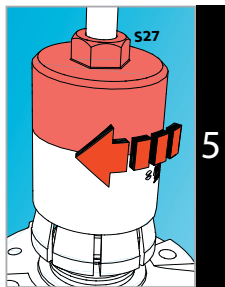
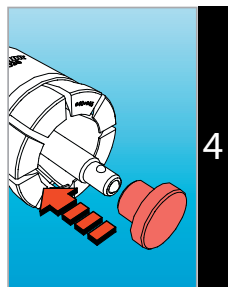
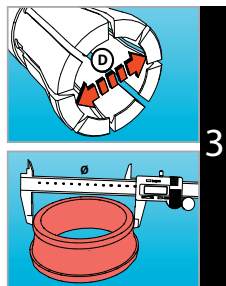
TOOL ASSEMBLY...



WHERE TO APPLY ...



USAGE INSTRUCTIONS ...



ENG

1 On the track bush (1) place the pushing bush (2) and on this put the track nut (3) with a spindle (4).

2 You can place the track bush: into the slot on the bearing race (A) or under the bearing race (B).

3 Choose the right size of the track bush (D) regarding the outer diameter of the bearing race (\emptyset).

4 If you pull the bearing race from the wheel hub you must place on the spindle also suitable support for the spindle. The support is not necessary by pulling the bearing race from the shaft.

5 Put the race puller over the bearing race and screw with hand the track nut - you can use also the wrench (S27) until the track bush reaches the bearing race.

6 Start to turn the spindle (S19) and with this pulling the bearing race - by this hold with wrench the track nut.

7 After pulling the bearing race unscrew the track nut with a wrench (S27).

8 Remove the bearing race from the puller.

SLO

1 Na stezno pušo (1) namestite potisno pušo (2), ter nanju privijte stezno matico (3) z vretenom (4).

2 Stezno pušo lahko namestite: v utor na ležajnem obroču (A), ali pod ležajni obroč (B).

3 Izberite pravilno velikost stezne puše (D) glede na zunanji premer ležajnega obroča (\emptyset).

4 Če snemate ležajni obroč iz pesta kolesa, morate na vreteno namestiti tudi ustrezen podstavek vretena. Pri snemanju ležajnega obroča iz gredi, podstavka ne potrebujete.

5 Snemalec namestite čez ležajni obroč in privijte stezno matico z roko, pomagata si lahko tudi s ključem (S27), dokler stezna puša ne objame ležajnega obroča.

6 Vreteno začnite privijati (S19), ter s tem snemati ležajni obroč, ob tem s ključem pridržite stezno matico.

7 Po snetju ležajnega obroča, odvijte stezno matico s ključem (S27).

8 Iz snemalca odstranite ležajni obroč.